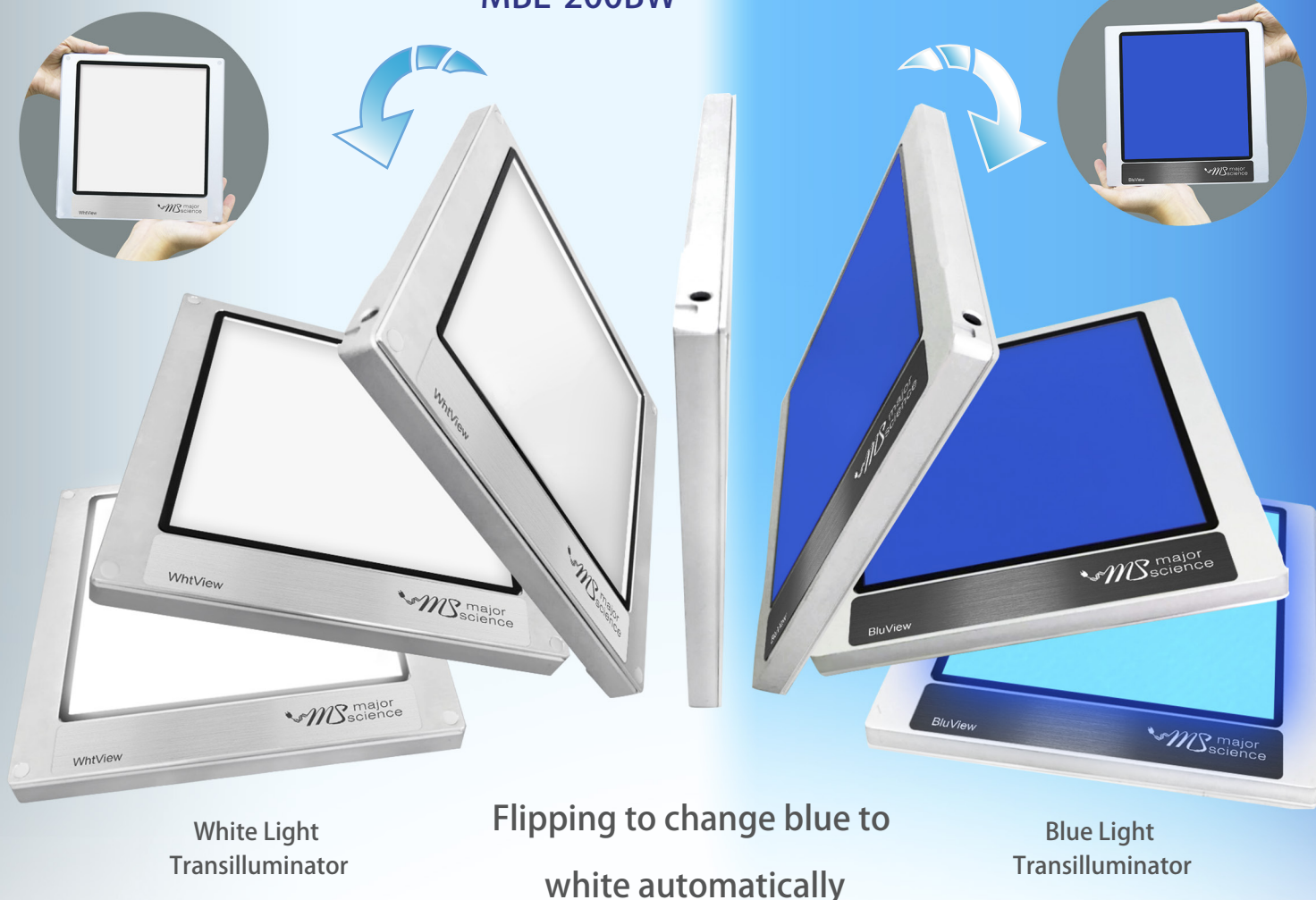




Dual LED Blue/White Light Transilluminator

MBE-200BW



The advanced Dual LED Blue/White Light Transilluminator is packed with powerful and safe 470 nm blue LED light and whole-wavelength white LED light and allows you to directly view the experiment result without wearing any UV protection equipment.

It's suitable for various life sciences research areas and provide more comfortable, convenient, and safe experience for real time observing the nucleic acids, proteins or other X-ray film.

Dual LED Blue/White Light Transilluminator design both sides integrate different LED light source for various area application.

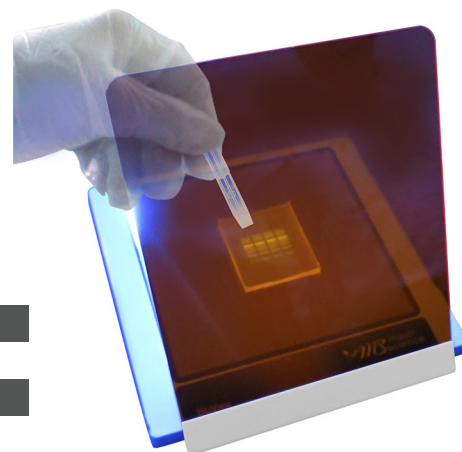
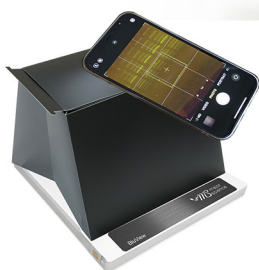
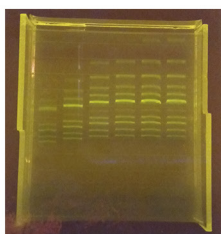
The advanced Dual LED Blue/White Light Transilluminator with imaging size of 153x153mm, you could fit any small and midi size gel on the transilluminator.

Dual LED Blue/White Light Transilluminator is also compatible with our imaging system such as Digimage System and Smartview Simple system.

Dual LED Blue/White Light Transilluminator content general manual switch ON/OFF and automatic shutdown for power saving, and it's including build-in dynamic sensor and it's can automatic switch blue or white light when you reverse the transilluminator for experiment requirement without need other parts.

Features

- Both sides integrate different LED light source
- Portable size and lightweight
- Safe 470nm blue light wavelength
- Real-time observation
- Efficient and early mistake detection
- Ultra-high light uniformity
- Aluminum alloy casing design
- Low heat dispersion
- Energy saving product



Specification

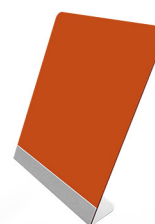
Name	Dual LED Blue/White Light Transilluminator
Model	MBE-200BW
Dimension (WxLxH)	Approx. 7.9"x7.9"x0.6" (200x200x15.6mm)
Viewing Area (WxL)	6"x6" (153x153mm)
Illuminator Base Design	Flat Bed
Blue Light Wavelength	470nm
White Light Wavelength	whole-wavelength
Automatic Shutdown	Approx. 6 min
Material	Aluminum Alloy
Power	DC 12V, 2A
Weight	935.5g
Standard Accessory	580nm amber filter and synthetic paper hood

Ordering Information

MBE-200BW	Dual LED Blue/White Light Transilluminator set, including amber filter and synthetic paper hood.
-----------	--

Accessories

CAS-MBE-200A-000	580nm amber filter
MBE-HOOD	Synthetic paper hood



Taiwan Office

No. 156, Sec. 1, Guoji Rd., Taoyuan Dist.,
Taoyuan City 330041, Taiwan
T/+886-3-3762878
F/+886-3-3761310

US Office

19959 Sea Gull Way
Saratoga, CA 95070
U.S.A.
T/+1-408-366-9866
F/+1-408-446-1107

Shanghai Office

Room 612, International business exhibition center,
9300 Hunan Road, Pudong, Shanghai, China
National toll-free No.: 400-823-9177
T/+86-21-50795277
F/+86-21-50795277

India Office

D.No.7-143, 2nd Floor,
St.No.2, Nagendra Nagar,
Habsiguda, Hyderabad-500007.
India
T/+91-40-27001515
F/+91-40-27001586